



XIII SCAR BIOLOGY SYMPOSIUM 2023



31 July – 3 August 2023
Christchurch, New Zealand

1ST ANNOUNCEMENT

We invite you to join us in Ōtautahi, Aotearoa (Christchurch, New Zealand), for the XIII SCAR biology symposium.

Join us and many of the world's leading scientists and early career researchers in Antarctic biology and ecology for the first face face-to to-face SCAR meeting in 3 years.

CONFERENCE LOCATION: Te Pae, Christchurch,
New Zealand

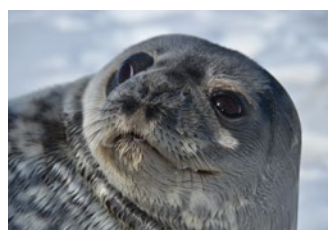
CONFERENCE DATE: 31 July – 3 August 2023

CONFERENCE WEBSITE: scarbiology2023.org

As the international gateway to New Zealand's famed South Island, Christchurch is on the doorstep of the majestic Southern Alps, world-class ski fields, lakes, spectacular coastlines, vineyards and national parks including Aoraki Mount Cook.

Ōtautahi (Christchurch) is the primary gateway to South Antarctica, particularly the Ross Sea region and research bases for several National Antarctic Programmes.

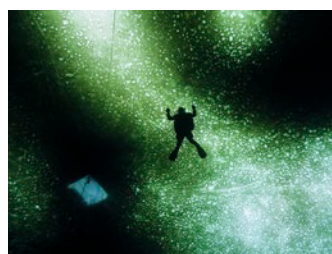
We hope you will join us and look forward to meeting you in 2023!



WHAT YOU CAN EXPECT

- Great science with a highly sustainable philosophy, underpinned by a rich cultural experience
- Four days of invited keynotes, plenaries, and concurrent sessions
- Mid-week break of excursions to enjoy some of the most spectacular parts of New Zealand's South Island
- Special focus meetings and workshops during the weekends before and after the meeting
- Enriched content with tikanga (traditions) and mātauranga (knowledge) of New Zealand's indigenous knowledge (mātauranga Māori people) with a true dedication towards to sustainability.

CALL FOR ABSTRACTS OPENS: 7th December 2022



Visit the website for all information, regular updates and inspiration to plan your visit!
scarbiology2023.org



XIII SCAR BIOLOGY SYMPOSIUM 2023



VISITING NEW ZEALAND

KEY FACTS

- Similar in land size to Great Britain and Japan
- The population is approximately 4.5 million people
- Wellington is the capital city
- English, Te Reo and New Zealand Sign Language are the official languages
- No dangerous animals or snakes
- Electricity supply runs at 230/240 volts
- No vaccinations required



New Zealand uses three prong angled power sockets at 230/240 volts

CURRENCY

The currency used is the New Zealand Dollar (NZD). All major credit cards can be used in New Zealand, with Visa and MasterCard accepted most widely.

All goods and services are subject to a 15% Goods and Services Tax (GST) included in the display price.

ENTERING NEW ZEALAND

- We enjoy welcoming visitors to New Zealand. To ensure you have an experience to remember, make sure you've done your homework and have everything sorted before you leave.
- When you arrive, your passport must be valid for at least three months beyond your intended departure date, and if required, have a valid New Zealand visa.
- From 1 October 2019, visitors from visa-waiver countries must request an Electronic Travel Authority (ETA) prior to coming to New Zealand. For more visa and immigration information visit [immigration.govt.nz](https://www.immigration.govt.nz)
- All eligible ePassport holders may use the SmartGate facility. Find out if your passport is eligible at [customs.govt.nz](https://www.customs.govt.nz)
- In order to protect New Zealand and its environment, certain items are not allowed to be brought into the country or must be declared if they are deemed to present a biosecurity risk. These include food, plants, animal products and outdoor recreational equipment. You may risk a fine if you fail to comply. For more information visit [mpi.govt.nz](https://www.mpi.govt.nz) or view the biosecurity video [here](#).

TIME DIFFERENCE

New Zealand is one of the first places in the world to see the new day, 12 hours ahead of GMT (Greenwich Mean Time).

In Summer, New Zealand time uses 'Daylight Saving', with clocks put forward one hour to GMT+13.

Daylight Saving begins on the last Sunday in September and ends on the first Sunday of the following April, when clocks are put back to GMT+12.

CLIMATE & WHAT TO BRING

Temperate climate with four distinct seasons. Always be prepared for sudden changes in weather, especially during outdoor activities.

Summer (Dec to Feb) 14°C – 28°C



T-shirt



Shorts



Jumper



Jumper



Light Pants

Autumn (Mar to May) 10°C – 24°C

Winter (Jun to Aug) 9°C – 20°C



Pants



Jacket



Gloves



Thermals



Layers



Jacket



Light Pants

Spring (Sep to Nov) 12°C – 22°C

The New Zealand sun is very strong. Always use a high SPF sunscreen and wear sunglasses and a sunhat when outside.

ACCOMMODATION

- New Zealand has a wide range of accommodation options to suit all budgets, including luxury lodges, an extensive range of hotels, motels, apartments, Bed and Breakfasts (B & B's).

GETTING AROUND



New Zealand has an extensive domestic air network. Book well in advance for the best airfares.



Trains operate in some cities and there are a range of scenic and world-class train journeys.



Passenger ferries connect the North and South Island. The journey between Wellington and Picton takes approximately three and a half hours.



Self-drive is an excellent way to explore New Zealand. Varied landscapes and dramatic geographical features are in close proximity. Most international rental vehicle companies have depots throughout New Zealand.

It is important to familiarise yourself with New Zealand's unique driving conditions, road rules and drivers' licence requirements. Find out more at [nzta.govt.nz](https://www.nzta.govt.nz)



PURE NEW ZEALAND: A WELCOMING JOURNEY